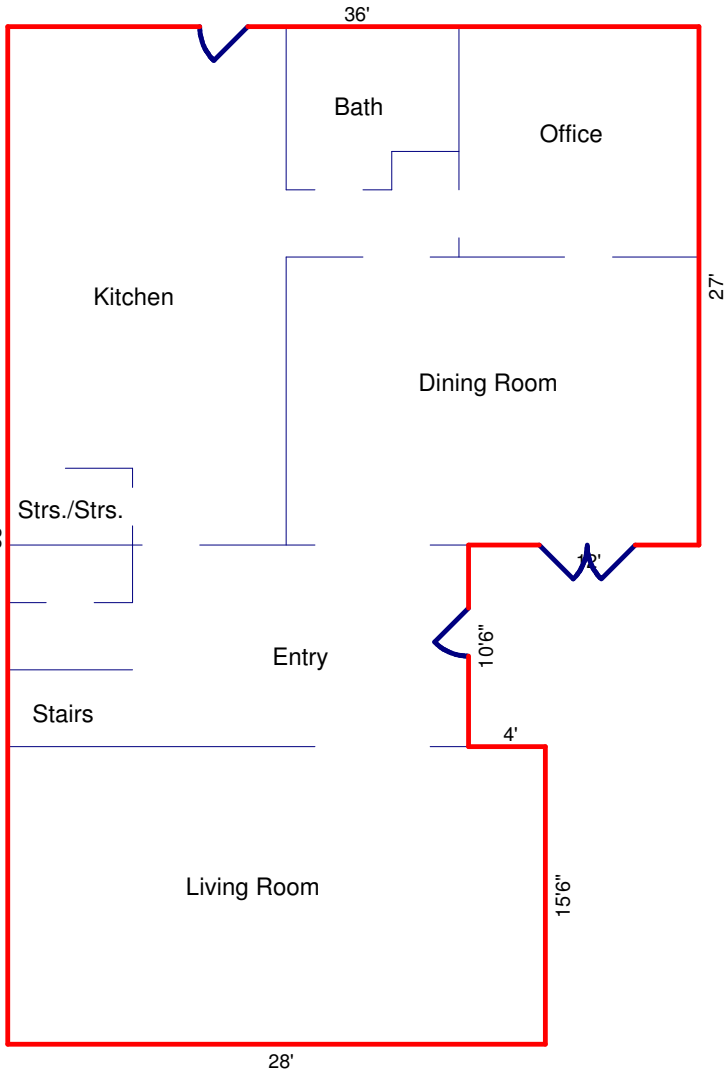
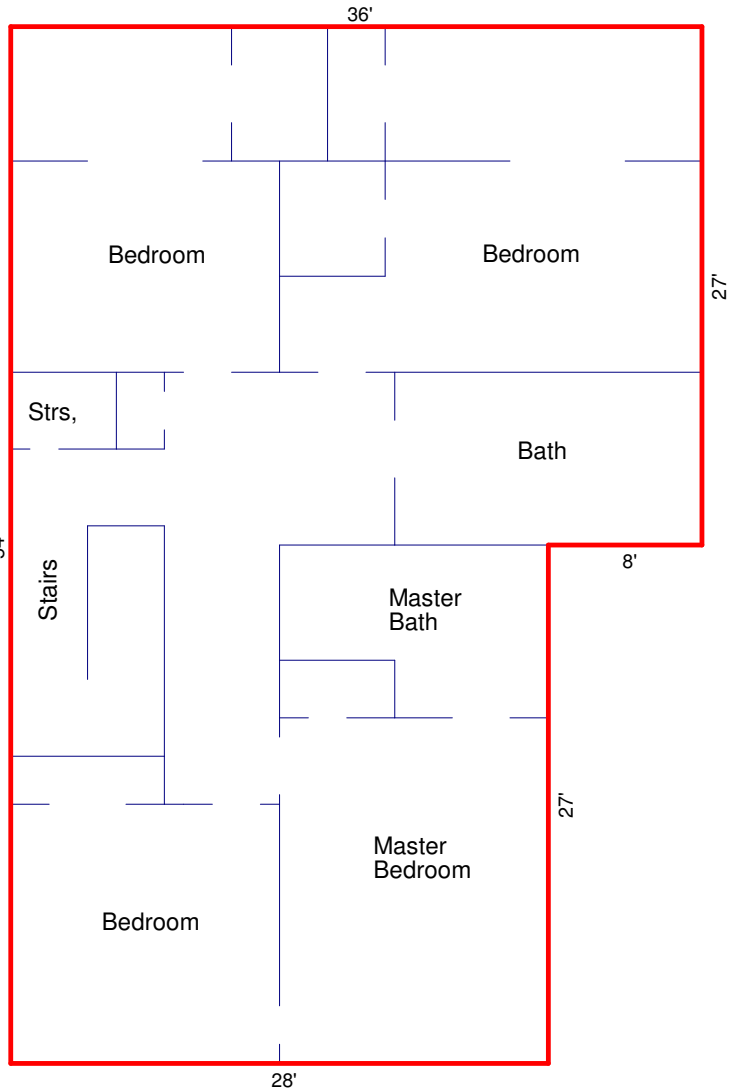


# 6 MESA AVENUE, PIEDMONT

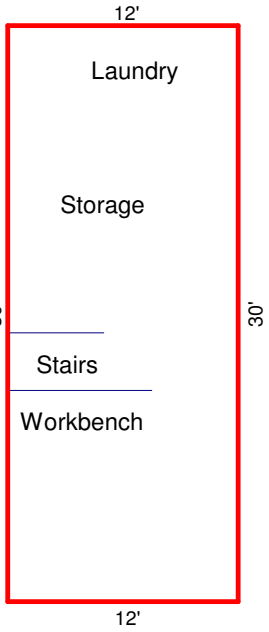
## FIRST FLOOR\*



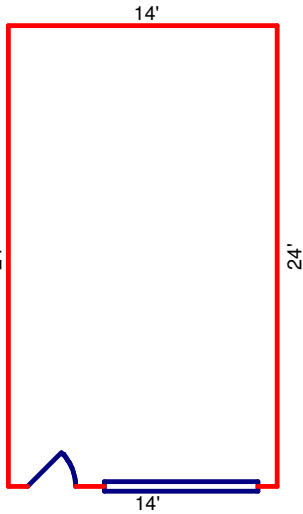
## SECOND FLOOR\*



## BASEMENT



## GARAGE



Prepared by Adam M. Lehman  
 CA State Cert. R.E. Appraiser  
 AR003634, on 09/20/2018

FIRST FLOOR*	SECOND FLOOR*	BASEMENT	GARAGE
24 x 53 = 1272	28 x 54 = 1512	12 x 30 = 360 SF	14 x 24 = 336 SF
4 x 15.5 = 62	8 x 27 = 216		
12 x 27 = 324	Subtotal* 1728 SF		* Total G.L.A. 3386 SF
Subtotal* 1658 SF	Total* 1728 SF		Total OTHER 696 SF
Total* 1658 SF			